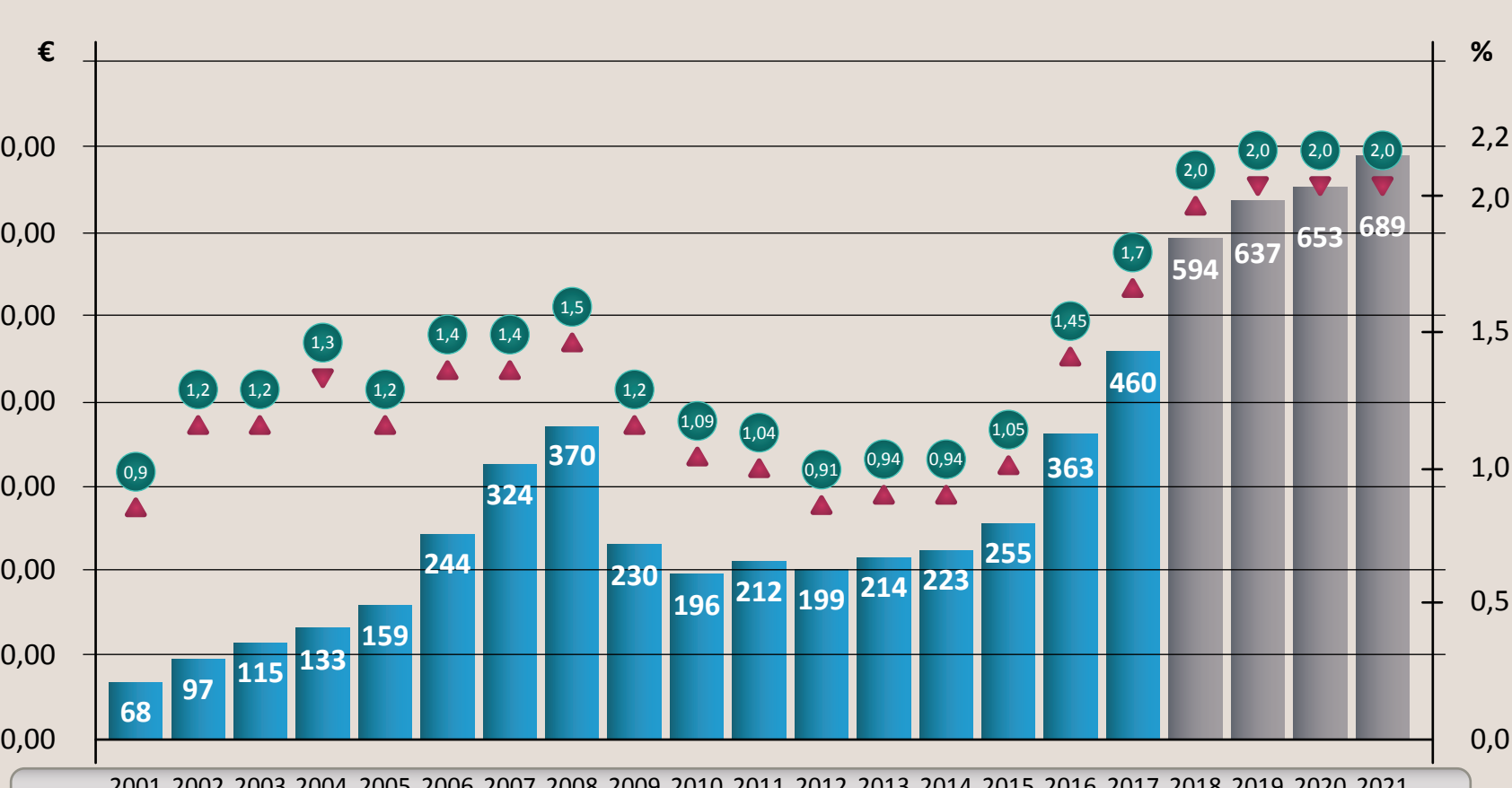


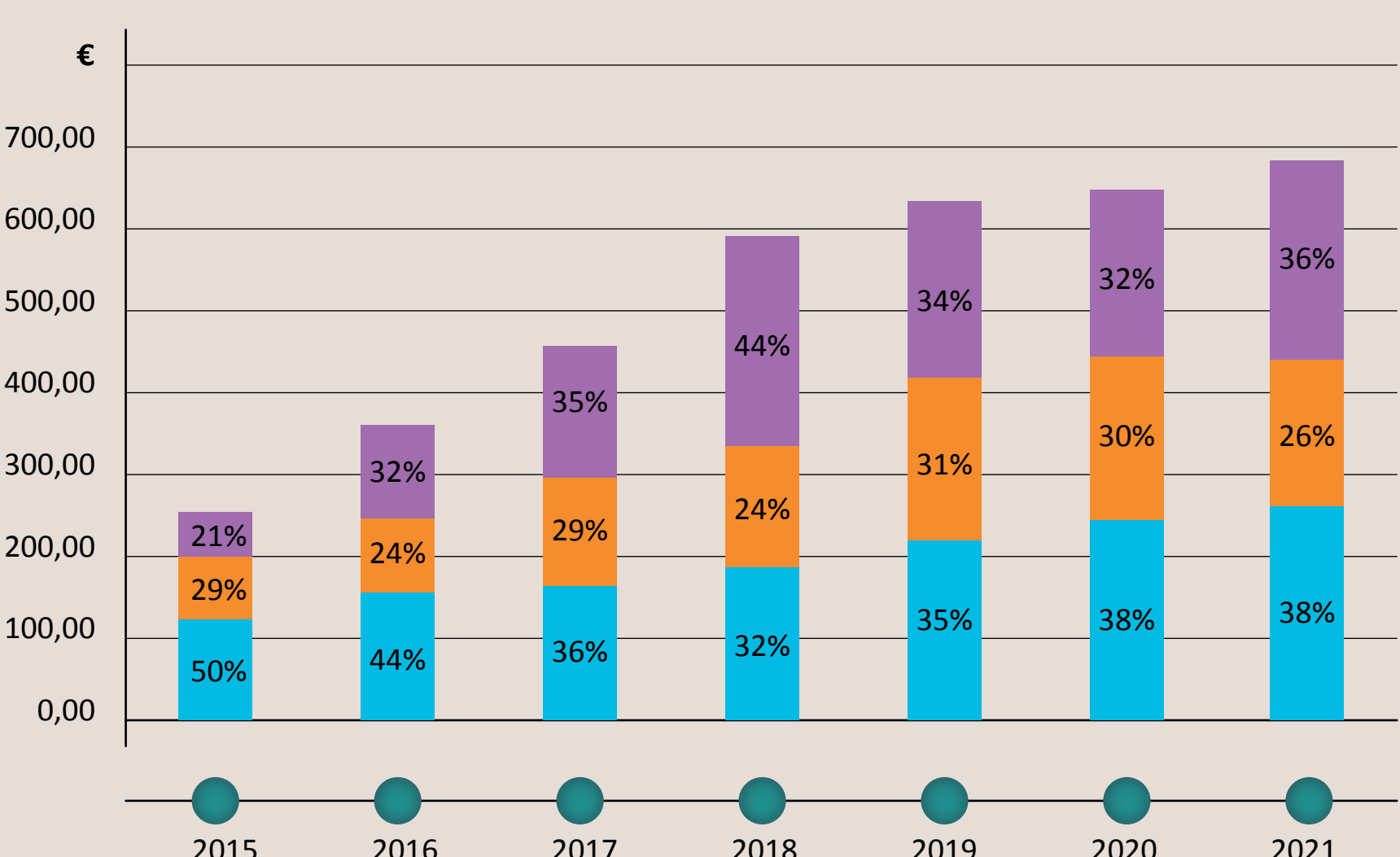
DEFENCE BUDGET EXPENDITURE



Republic of Latvia Defence Budget Dynamics 2001-2021, Million EUR
Defence Budget % of GDP

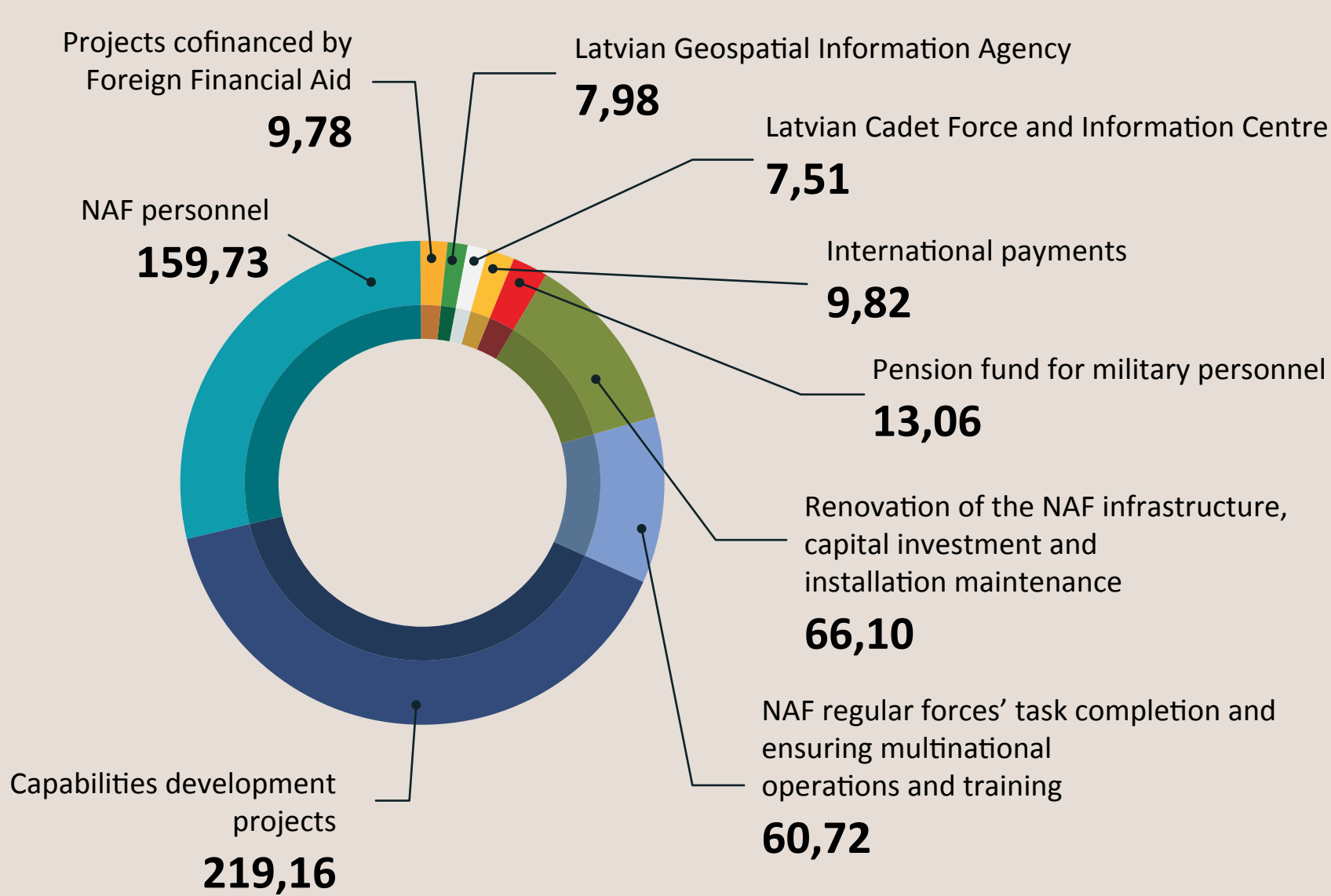


BUDGET CATEGORIES

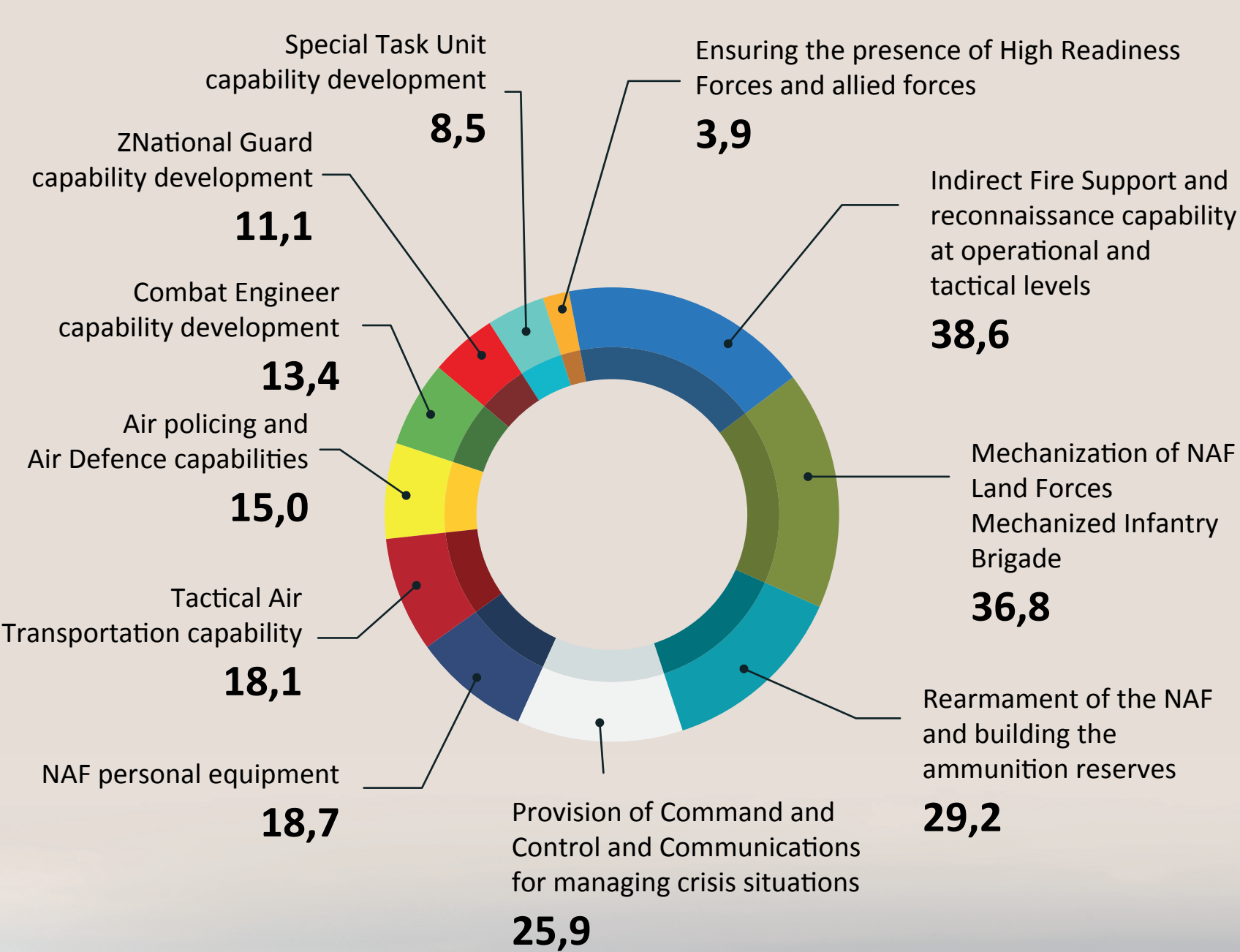


| | 2015 | 2016 | 2017 | 2018 | 2019 | 2020 | 2021 |
|--------------|---------------|---------------|---------------|---------------|---------------|---------------|---------------|
| investment | 52.96 | 114.57 | 158.93 | 258.32 | 217.2 | 207.1 | 246.21 |
| maintenance | 75.34 | 88.32 | 134.83 | 144.95 | 195.44 | 199.45 | 179.22 |
| personnel | 127.03 | 159.76 | 165.81 | 190.28 | 224.01 | 246.49 | 263.17 |
| Total | 255.33 | 362.65 | 459.57 | 593.55 | 636.65 | 653.04 | 688.60 |

The most significant expenditure positions in 2019, million EUR



Capabilities development projects in 2019, million EUR



* excluding personnel and maintenance expenses.

